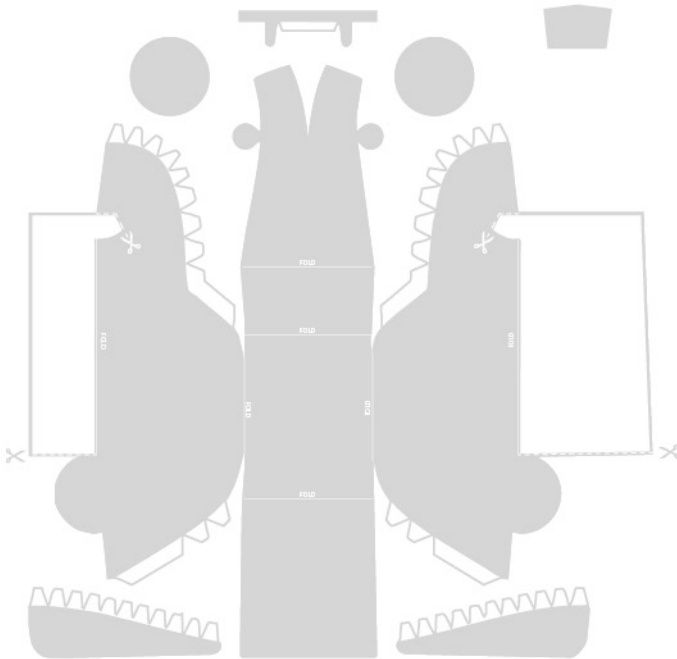


Instructions



Cut out all parts. The illustration on the left shows the folding lines and the additional cutting lines.

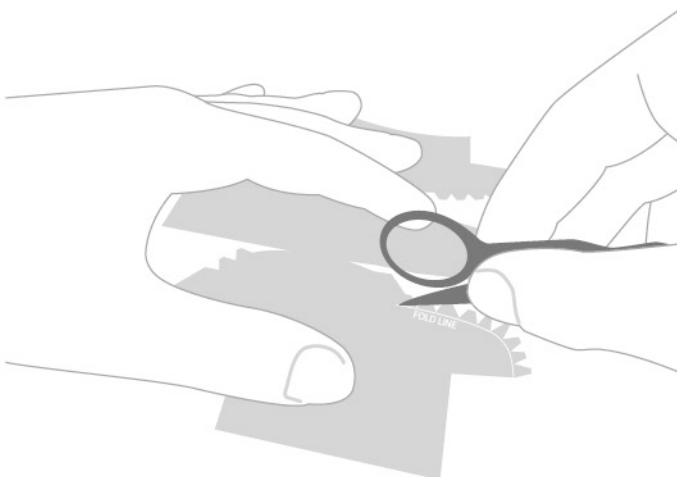
After having cut out all the parts, simply fold, and glue.

Et voilà.

Note: two points are not to be overlooked.

- At the point where the front wheel is connected, you have to make small cuts to ensure the wheel stand straight even though the 'nose' part comes together.
- Before folding the bottom part (indicated with A), make sure the cut goes all the way to the 'chassis'/folding line.

See illustration.



Hint: Sharp folding edges best are obtained when, before folding, you slightly carve the lines either with a knife (just dent, don't cut) or with the point of your scissors. Careful. Just dent enough so the paper 'knows' where it needs to bend.